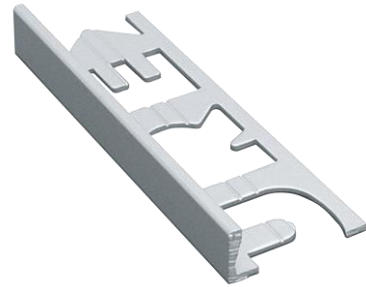


CORNER END PROFILE



- > elegant finish
- > many design variants
- > protects tile edges

Product description

Corner end profile in many design variants for a clean, elegant finish of tile edges. Brass varieties are not recommended in wet rooms.

Along with an elegant finish for tile edges, the product also protects the edges and can be used as a decorative transition between different covering types (e.g. tiles to carpet) or for the demarcation of covering materials like carpet, parquet and laminate.

Delivery format

Container	Outer packaging	Pallet
3 M / STK	-	300 STK
3 M / STK	-	400 STK
3 M / STK	-	550 STK
3 M / STK	-	600 STK
3 M / STK	-	630 STK
700 STK / STK	-	700 STK
3 M / STK	-	700 STK
3 M / STK	-	800 STK
3 M / STK	-	930 STK
1000 STK / STK	-	1000 STK
3 M / STK	-	1000 STK
1050 STK / STK	-	1050 STK

Storage

Can be stored frost-free, cool, and dry on wooden shelves in the unopened original container for 0 days

Processing

Processing

Very simple to use thanks to the Murexin hole pattern: apply the adhesive mortar with the toothed trowel. Push in the corner end profile into the mortar bed with the moulded arm and align it. Then fill fully with adhesive. The subsequently laid tiles should be flush with the edge of the rail. Tile end pieces are to be used for forming corners. After laying the tiles and hardening of the adhesive, a solid connection is created between tiles, profile and substrate.

Technical data

Materials

stainless steel V2A, stainless steel V2A matt brushed,
aluminium anodised, aluminium colour coated

Test certificates

Tested in accordance with (standard, classification ...)

Aluminiumchromatierung gemäß DIN 50939

Passivieren von galvanischen Zink- und Kadmiumüberzügen gemäß ON C 2520

Eloxierung gemäß ON C 2531 und DIN EN 12373-1

Substrate

Suitable substrates

Concrete
Cement screed
Anhydrite screed
Mastic asphalt
Plaster
Lime-cement plaster
Masonry
Gypsum plasterboards
Smooth concrete
Aerated concrete
Wooden substrates

The substrate must be dry, frost-free, solid, weight-bearing, dimensionally stable, free of dust, dirt, oil, grease, release agents and loose parts, and it must comply with the applicable technical national and European directives, standards and "generally accepted rules of the trade".

Product and processing instructions

Material information:

- The properties of the material may be significantly altered if not processed within the recommended temperature and/or humidity range.
- Bring materials up to corresponding temperature before processing!
- In order to maintain the product properties, do not add any foreign materials!
- Water dosing amounts or thinning specifications must be precisely kept!
- Check coloured products before use for colour accuracy!
- Colour consistency can only be guaranteed within a batch.
- The colouring is significantly influenced by the environmental conditions.

Environmental information:

- Do not process at temperatures below +5 °C!
- The ideal temperature range for material, substrate and air is +15 °C to +25 °C.
- The ideal relative air humidity range is between 40% to 60%.
- Increased humidity and/or lower temperatures delay, lower air humidity and/or higher temperatures accelerate drying, setting and hardening.
- Ensure sufficient ventilation during the drying, reaction and hardening phase; avoid draughts!
- Protect from direct sunlight, wind and weather!
- Protect adjacent components!

44000, CORNER END PROFILE, valid from: 18.12.2023, Magdalena Riegler, Page 2

Tile laying technology

Tips:

- We recommend using a test surface first or a small area for initial, small-scale testing.
- Observe the product data sheets of all MUREXIN products used in the system.
- Keep a genuine original container of the respective batch for later repair work.

The information provided reflects average values obtained under laboratory conditions. Due to the use of natural raw materials, the indicated values of individual deliveries may vary slightly without impacting the product suitability.

Safety instructions

This leaflet is based on extensive experience, is intended to convey the best of our knowledge, is not legally binding and does neither constitute a contractual legal relationship nor a subsidiary obligation resulting from the bill of sale. The quality of our materials is guaranteed within the framework of our general terms and conditions. Our products may be used by professionals and/or experienced and accordingly technically skilled persons only. Users are not released from inquiring in case of uncertainties or from rendering professional workmanship. We recommend using a test surface first or a small area for initial, small-scale testing. Naturally, it is not possible to describe or foresee all possible current and future uses and peculiarities. Information that is assumed to be familiar to experts has been omitted.

Please observe the current, technical, national and European standards, guidelines and data sheets regarding materials, substrates and the subsequent construction. Please contact us if you have any reservations or doubt.

This version is rendered invalid if a new version is released. The most recent data sheets, safety data sheets and the terms and conditions are available online at www.murexin.com.